

# Φορέας Διασφάλισης και Πιστοποίησης της Ποιότητας της Ανώτερης Εκπαίδευσης



The Cyprus Agency of Quality Assurance and  
Accreditation in Higher Education

# Who we are



- The Cyprus Agency is the competent Authority responsible for ensuring the quality of higher education in Cyprus
- It is a public organisation
- It operates according to CYQAA's Law

# Human resource

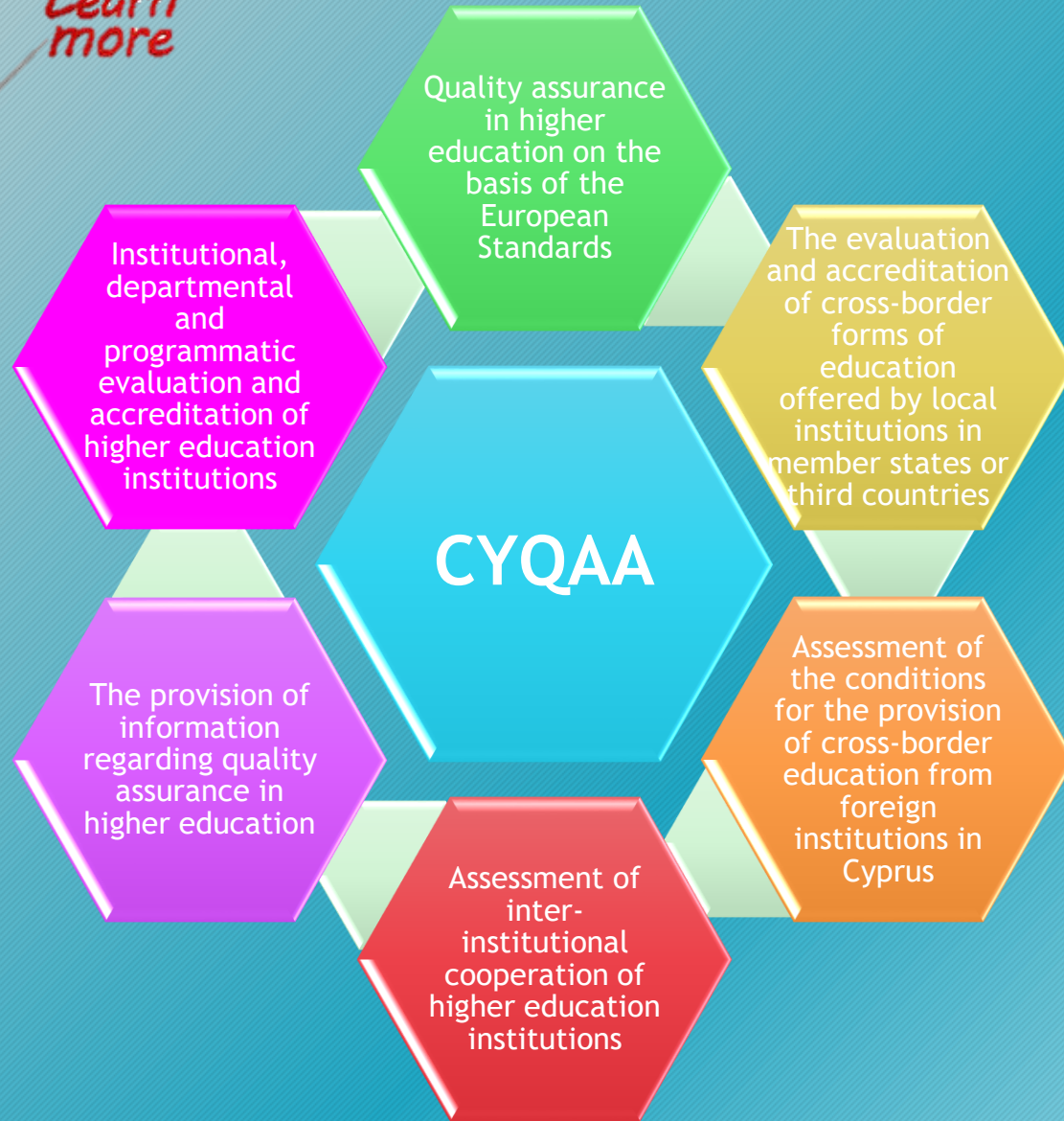


The Agency's driving force is its staff.



The Agency's decision machine is its Council.





# What we do



# The CYQAA strives for continuous promoting of values:



Independence

Integrity

Transparency

Professionalism

Collaboration

Trust

# CYQAA



- Is a full member of the European Network for Quality Assurance ([ENQA](#))
- Is a full member of the International Network for Quality Assurance and Accreditation Higher Education ([INQAAHE](#))
- Is an affiliate member of the European University Association ([EUA](#))
- Is a full member of the European Distance and E-Learning Network ([EDEN](#))
- Has applied for registration to the European Quality Assurance Register ([EQAR](#))
- Has applied for recognition as an accrediting agency to the World Federation for Medical Education ([WFME](#))

# Types of evaluation



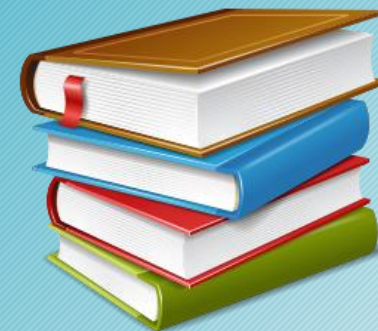
Institutional



Departmental



Programmatic



# Evaluation stages



Application



Evaluation



Decision





# Who conducts the programmatic evaluation



The External Evaluation Committee (EEC), which consists of:

- three at least academics
- one university student
- one member of the professional association which grants the licence to exercise the particular profession (if applicable)
- one distance learning expert (if applicable)



# Site visit



# Who takes the decision

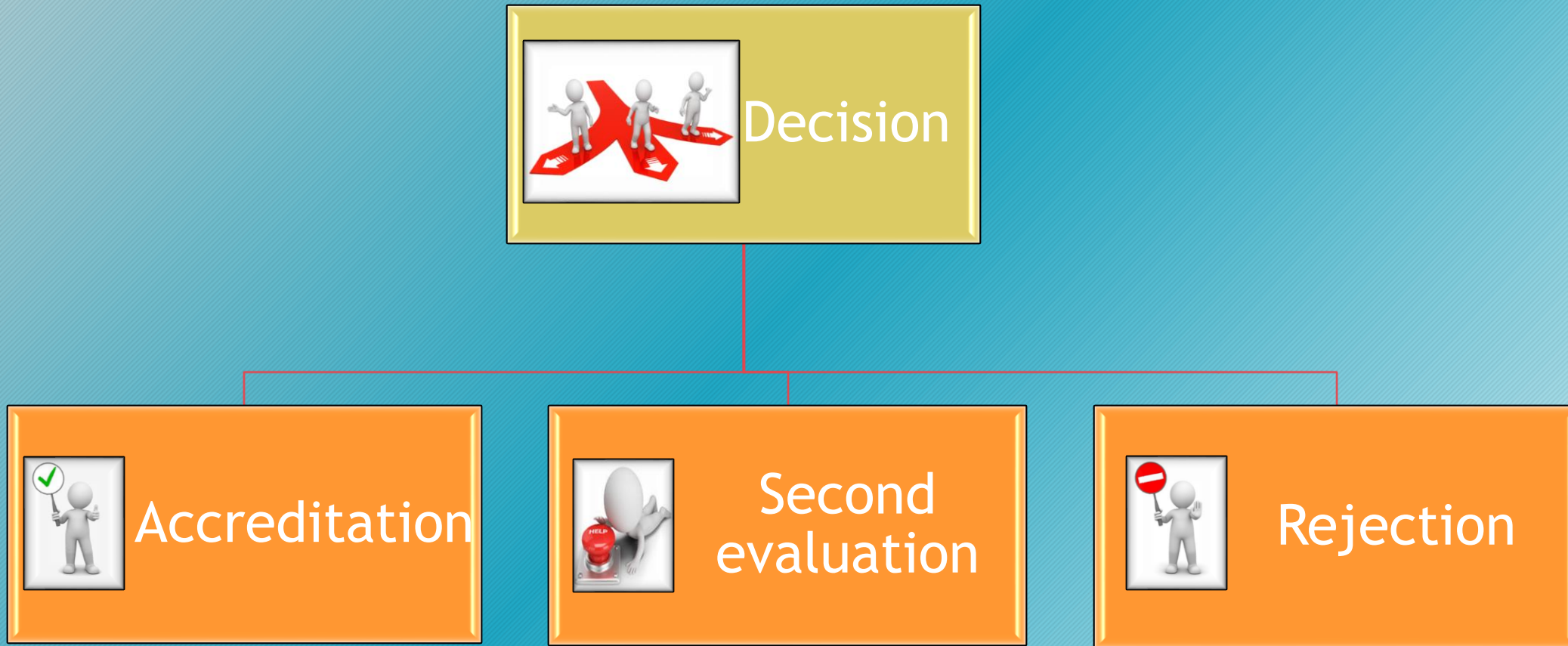


CYQAA is steered by a Council of eleven members, including its President.



# Types of decision

Follow up!



# Programmatic evaluation and quality standards



The evaluation of the programs of study is conducted based on predetermined:

- ❖ CYQAA standards, quality indicators and European standards and guidelines (ESG)  
*The template of the external evaluation report refers to any program of study including distance learning, doctoral and joint programs*
- ❖ standards for medical programs (WFME)  
*The template of the external evaluation report refers to basic medical education*

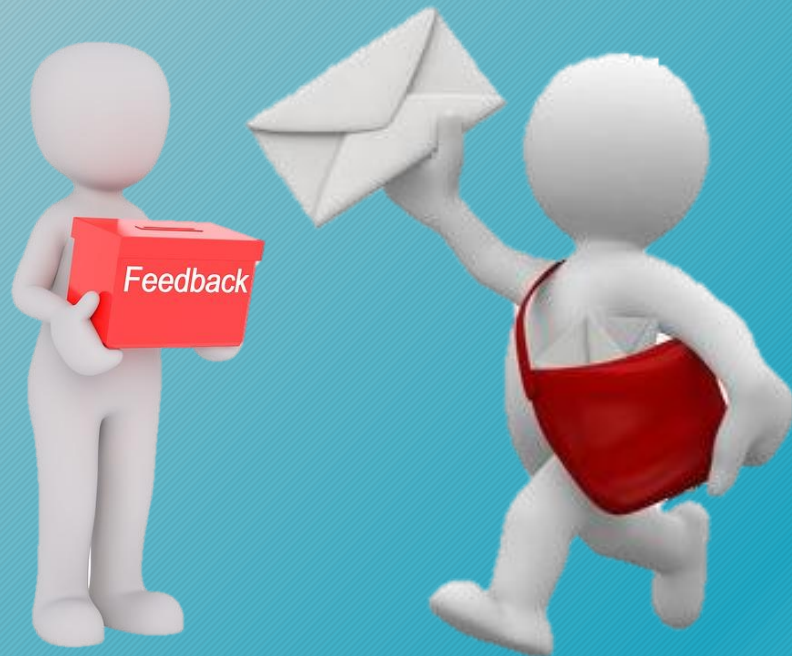
# Programmatic evaluation - Basic pillars



The evaluation of the programs of study mainly focuses on the following:

- ✓ **Study program:** policy for quality assurance, design, monitor and review of the program, program's purpose, objectives and expected learning outcomes, program's structure, ECTS allocation, international dimension of the program, information made public
- ✓ **Teaching, learning and student assessment:** teaching and learning methodology, learner-teacher relationship, criteria and methods of student assessment, synergy of research with teaching
- ✓ **Teaching staff:** recruitment and development, qualifications, teaching staff involvement in research, publications, teaching performance assessment, mobility
- ✓ **Students:** admission criteria, progression, recognition and certification regulations, mobility, success and drop-out rates, graduates employability
- ✓ **Resources:** financial resources (funds), physical resources (laboratories, libraries, equipment, study facilities, teaching materials), human resources (student welfare services, mentors/tutors)

You can find us



[www.dipae.ac.cy](http://www.dipae.ac.cy)

[info@dipae.ac.cy](mailto:info@dipae.ac.cy)

22504340

Thank you

